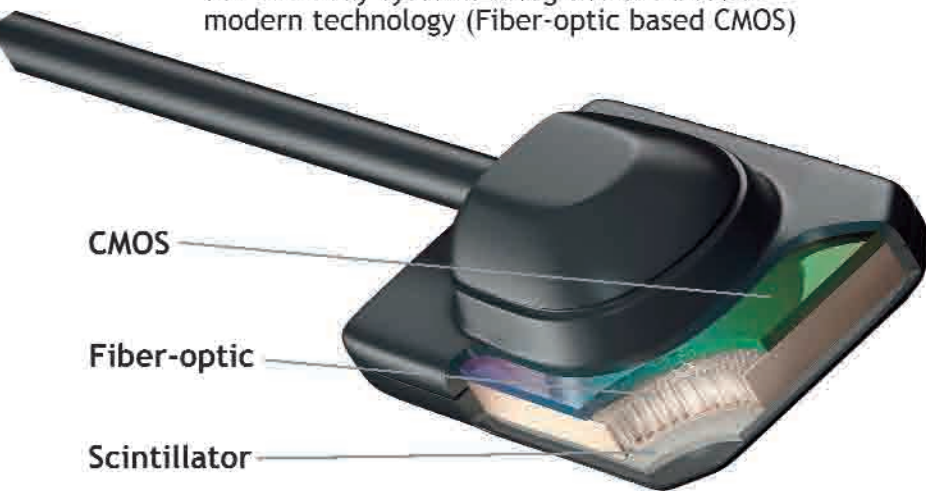


So high-tech

Cutting-edge Technology

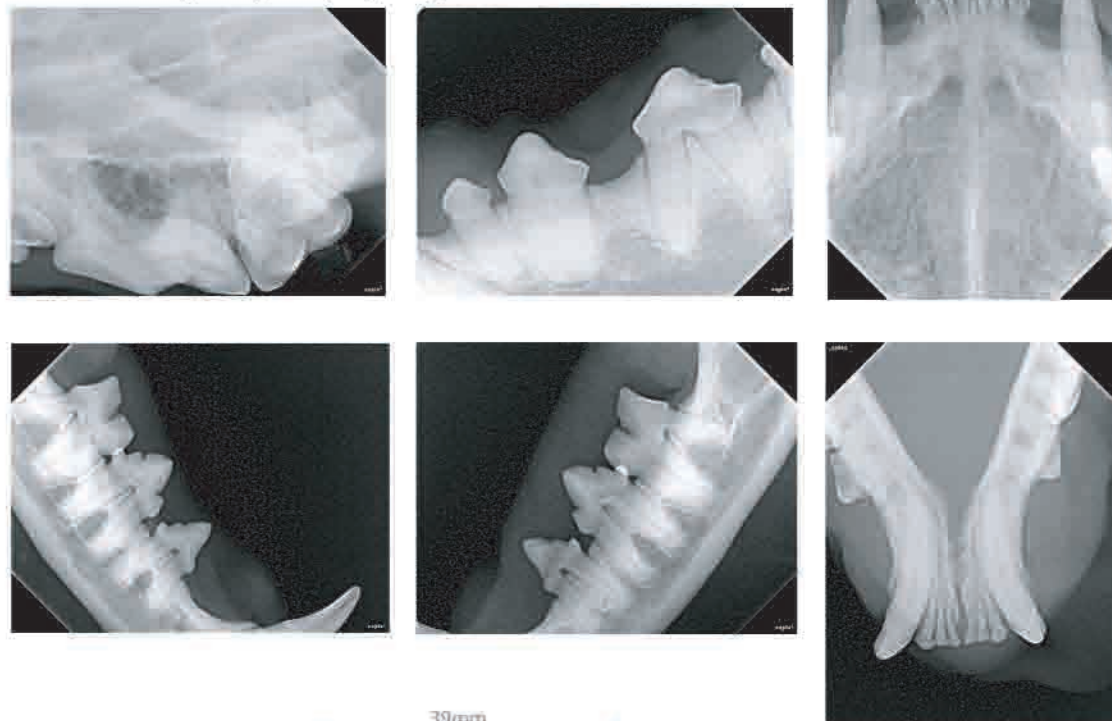
SOPIX2 X-ray systems integrate the best of modern technology (Fiber-optic based CMOS)



So clear

Exceptional image quality

High-definition images and striking contrast can be achieved to greatly simplify diagnosis



So convenient

Direct USB -
No separate controller required



So easy

The result of years of research into the specific needs of veterinary dentistry, **SOPIX2** introduces the integration of patented **Ace** technology with a fiber optic-based CMOS chip.

Ace makes it possible to control the amount of X-rays accumulated by the sensor, ensuring that all images are optimal and never overexposed. These advances now make it possible to see pathology such as tooth resorption detail and offer the ability to see through the zygomatic arch. Bone trabeculation and lamina dura are clearly visible. Evaluations by the elite of the veterinary dental community have revealed exceptional results.

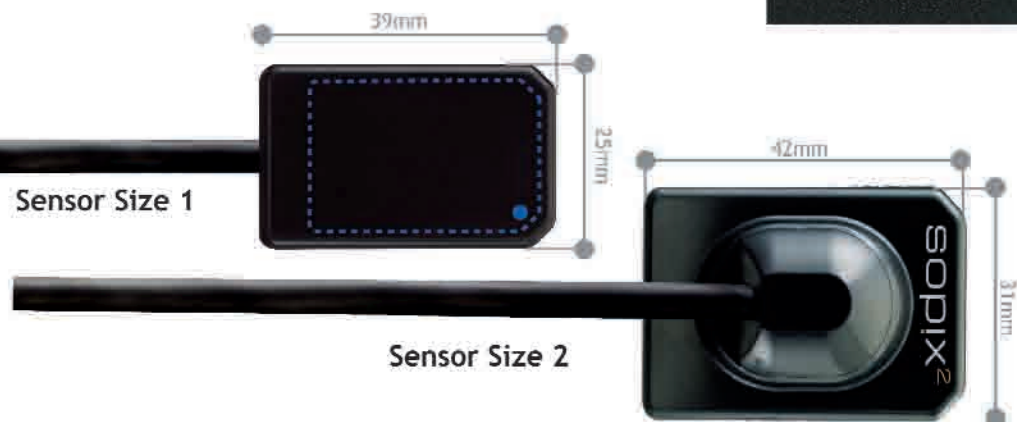
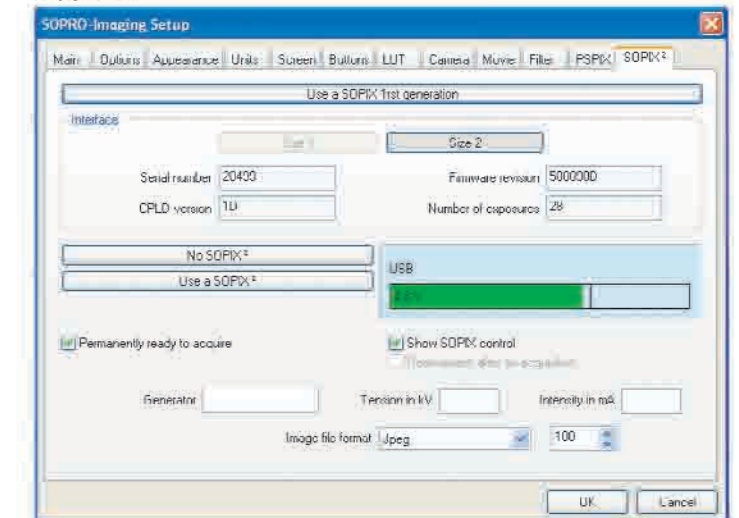
So functional

SOPIX2 together with SOPRO Imaging allows you to display the efficiency of your x-ray generator thanks to its Oscilloscope mode.



So smart

SOPIX2 also allows you to test the USB port of the computer to make sure the proper voltage is being supplied.



SOPIX2 at 0.20 seconds



Competitor sensor at 0.20 seconds

sopro imaging Vet

