

AFP IMAGEWORKS MINI-MEDICAL/90

MINI-MEDICAL/90™

The World's Most Popular
Compact X-Ray Film Processor

...Over 30,000 Installed

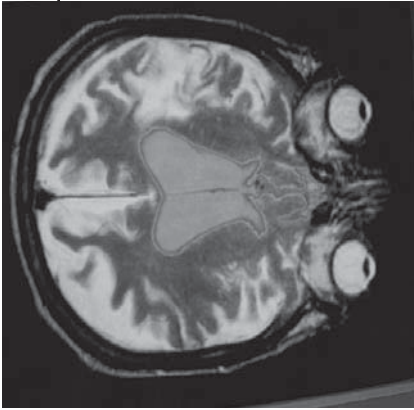


"The Mini-Medical is the perfect choice for small offices, clinics, satellite health care facilities and mobile installations."

AFP IMAGEWORKS Mini-Medical/90™ Mini-Medical: Maxi-Savings

'Mini-Medical'...The most popular compact x-ray film processor in the world

When the AFP ImageWorks 'Mini-Medical' film processor was first introduced, it quickly became one of the all time best sellers to hospitals, clinic offices and private practices alike. Compact, reliable and easy to use, the 'Mini-Medical' has everything you'll ever want and need in one stand-alone package.



High Diagnostic Quality, Low Maintenance

World renowned for dependability, the Mini-Medical delivers the highest quality x-ray images, week after week, year after year. Fully automatic and fully warrantied, you get the best of both worlds: outstanding film processing quality and years of trouble-free operation.

Mini-Medical: Maxi-Savings

Why has the Mini-Medical remained so popular over the years? The reason is simple: it's simple. Simple...as in easy to use. Simply functional. Simply reliable. All those simples add up to another big 'S' word: Savings. The Mini-Medical has been designed with many of the time, space and money saving features usually found only in higher priced models.

Fast, Versatile... Loaded with Features

The Mini-Medical/90 is a 90-second workhorse that pays for itself with smooth, steady efficiency...in practically no time at all. Built and priced to make years of film developing cost effective, the Mini-Medical is the perfect choice for hospitals, private practices, clinics and mobile installations. Special versions of this processor are available for those dedicated to mammographic film processing. The Mini-Medical accepts all standard x-ray film sizes...from 4"x4" (10x10cm) to as large as 14"x36" (36x92cm)...and can process 90 14"x17" (36x43cm) films per hour.

Built-in quality control indicators

A visual ready indicator conveniently alerts operator after a minimal warm up period. After the last film is processed, the machine returns to an energy and water conserving standby mode. While in standby mode, a special 'jog' cycle is employed to guarantee consistent quality throughout the processing day. Separate indicator lights notify operator that solutions are kept at optimal levels and temperatures.

Automatic Chemical Replenisher

An electronic sensing system replenishes solutions automatically, keeping all chemicals at peak operating efficiency.

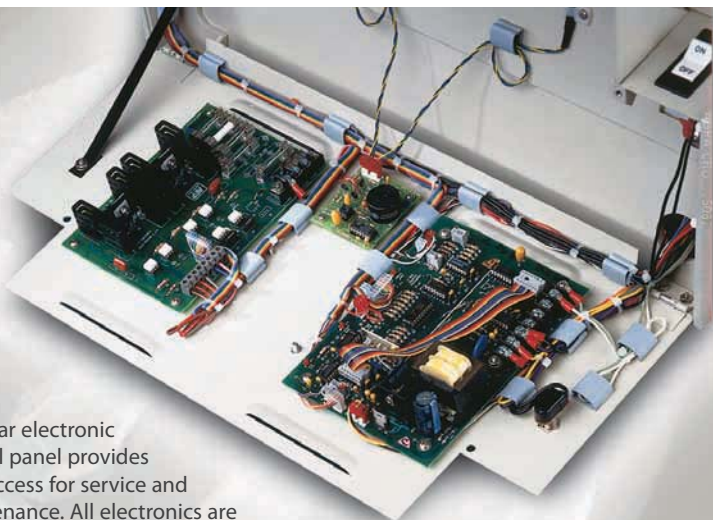
No Plumbing Necessary

An optional "no plumbing" kit allows the unit to function on self-contained water, making the Mini-Medical ideal for mobile installations, and where EPA regulations restrict effluent disposal or where no water or drains exist.*



Automatic Wash Water Control

The Mini-Medical minimizes the consumption of water by eliminating flow during standby mode. Approximately 1/3 liter of fresh water is added during each jog cycle to reduce potential algae problems.



Modular electronic control panel provides easy access for service and maintenance. All electronics are safely separated from harmful fumes.

Infrared Dryer

Energy efficient I.R. heat lamps dry each film quickly and quietly. A unique pivot-back dryer rack enables easy access to wash section and for service and cleaning.

Space Saving Size

Our unique Uni-Body design requires only a minimum of precious darkroom space, measuring only 33" x 22" x 24" (83.8 x 55.9 x 61cm) overall.** Processed film exits from the front, allowing the unit to easily fit in corners or flush against walls. An optional rear film exit is available to deliver film "through the wall" for pick up in the exam room, laboratory, or other area.

Reliable Efficiency

The Mini-Medical drive system is the result of years of technological advances. Ultra-reliable and incredibly rugged, our new worm drive greatly reduces the load on the system and extends motor life.

Easy to Use, Easy to Install

The Mini-Medical runs on standard 110V (220V optional) electrical supply and requires only a cold water line connection.

It can be installed either inside or outside of the darkroom (when installing inside the darkroom with developed film exiting into daylight, a rear film exit version is required). The optional 'no plumbing' conversion kit can be used in conjunction with replenisher tanks to eliminate the need for running water and exterior drainage, ideal for mobile medical facilities. Fixer drainage hose fittings are compatible with most standard silver recovery units. The Mini-Medical also includes replenisher storage tanks, connecting plumbing hoses and a high strength, sturdy base stand.

*For extremely low volume user (2-3 films per day max.) a "flood replenishment" option is available.

**For counter storage overall footprint measures just 21" x 22" (53.9 x 55.9cm)



Comes ready to set up, complete with a sturdy base stand, 7 gallon tanks, connector hoses and starter parts kit all included.

Easy to maintain, backed by the industry's most comprehensive warranty

The simplicity of the Mini-Medical carries right through to the easy-to-understand operating manual that accompanies every unit. Should warranty repair be necessary, the Mini-Medical is backed by a comprehensive one year parts warranty and 2 years on the drive motor and recirculating pumps. Just contact a factory trained dealer service representative for prompt responsive service.

Seeing is believing

We've told you why the Mini-Medical is the world's most popular film processor (over 30,000 satisfied owners), but don't take our word for it, make the Mini-Medical a part of your practice and see for yourself.



For more information call 1.800.592.6666 or 1.914.592.6100 or visit us at www.ImageWorksCorporation.com. Once you see it in action you'll see why the

Mini-Medical is the biggest name in compact x-ray film processors.



250 Clearbrook Rd., Suite 240
Elmsford, NY 10523

Phone: 1.800.592.6666
1.914.592.6100

Fax: 1.914.592.6148

Email: marketing@ImageWorksCorporation.com

www.ImageWorksCorporation.com

Accessories

9992305003 No plumbing conversion kit
9992302608 User Parts Kit
9995100004 Base stand (Mini-Medical Series)
9992305005 Replenisher tank set (7 gal)
9992305020 Darkwall Panel

AFP IMAGEWORKS Processor Specifications

Category	MINI-MEDICAL/90™ MINI-MEDICAL™ MINI-MEDICAL/EP™ MINI-MEDICAL/2S™
Dimensions	
Length	33 in. (83.8cm) / 21 in. (53.3cm) base
Width	22 in. (55.9cm) / 21 in. (53.3cm)
Height	24.5 in. (62.2cm) / 21 in. (53.3cm)
Height of base is 29 in. (74cm)	
Weight	
Net	100 lb (45.5 kg)
w/solutions	150 lb (68.2kg)
Materials accommodated	
Film sizes (minimum)	4 x 4 in. (10 x 10cm)
(maximum)	14 x 36 in. (36 x 92cm)
Film types	Standard X-ray film suitable for 90 sec. processing (RP) (only for Mini-Med/90)
Chemistry types	Chemistry suitable for rapid processing (RP)
Tank capacities (each tank)	1.9 gal. (7.2 liters)
Power requirements	115 V, 60 Hz, 1PH, 15 Amp 220 V, 50 Hz, 1PH, 7.5 Amp 220 V, 60 Hz, 1PH, 7.5 Amp
Water consumption	1/4 gal/min (.9 liters/min)* *No water consumption during "standby mode"
Drain Requirement	2 gal/min (7.6 liters/min)

	Mini-Medical/90	Mini-Medical	Mini-Medical/EP	Mini-Medical/2S
Processing Speed (in seconds) (14" x 17") [36 x 43cm]				
Developer Immersion Time	21	29	44	21/29*
Processing Time (Leading Edge to Leading Edge)	90	130	180	90/180*
Processing Time (Dry to Drop)	120	150	240	120/240*
Production Capacity (14" x 17" films per hour) [36 x 43cm]	90	60	45	90 - 45*
(Mixed film sizes per hour)	210	150	105	210 - 105*
Processing Speed (Inches/cm per minute) 28.5 In/72.4 cm				

*Factory settings. Suitable timings to meet your specific needs can be adjusted upon installation.

The AFP ImageWorks Mini-Medical family of processors have an optional "No Plumbing" kit available for installations

FRONT EXIT VERSIONS	110V/60	220V/50	220V/60
MINI-MEDICAL/90™ (90 SEC. VERSION)	9992305300	9992305500	9992305400
MINI-MEDICAL™ (130 SEC. VERSION)	9992305000	9992305200	9992305100
MINI-MEDICAL/EP™ (Extended Processing Version)	9992305600	9992305800	9992305700
MINI-MEDICAL/2S™ (2 SPEED VERSION)	9992308400	9992308500	9992308500
REAR EXIT VERSIONS	110V/60	220V/50	220V/60
MINI-MEDICAL/90™ (90 SEC. VERSION)	9992306800	9992306900	9992308800
MINI-MEDICAL™ (130 SEC. VERSION)	9992306600	9992306700	9992308900
MINI-MEDICAL/EP™ (Extended Processing Version)	9992307000	9992307100	9992307300
MINI-MEDICAL/2S™ (2 SPEED VERSION)	9992308600	9992308600	9992308600

AFP ImageWorks Dealer